

Anti human CAR mouse monoclonal antibody

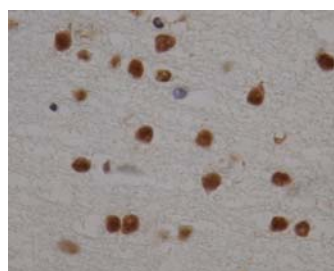
CAR: Constitutive androstane receptor

Code No	PP-N4111-00 old No. —
Clone No.	N4111
Lot.	A-1
Concentration	1mg/mL
Volume	100µL
Ig Class	G1
Description	CAR (NR1I3) is a member of orphan receptor. CAR is mainly expressed in liver and lower levels of expression are observed in heart, muscles, kidney and lung. CYP3A and CYP2B are regulated by CAR, which suggest xenobiotics can activate multiple CYP genes through this receptor. Mouse homolog is induced by phenobarbital and CAR-null mouse resistance to acetaminophen toxicity. CAR affects metabolism of drugs and other xenobiotics.
Nomenclature	NR1I3
Genbank	Z30425
Origin	Produced in BALB/c mouse ascites after inoculation with hybridoma of mouse myeloma cells (NS-1) and spleen cells derived from a BALB/c mouse immunized with E.coli-expressed recombinant human CAR (76-348 aa).
Specificity	This antibody specifically recognizes human CAR and cross reacts with mouse and rat CAR. This antibody does not recognize human PXR.
Purification	Ammonium sulfate fractionation
Formulation	Physiological saline with 0.1% NaN ₃ as a preservative.

Application / Recommended Concentration

In order to obtain the best results, optimal working dilutions should be determined by each individual user.

Western Blot	1 ug/mL
Non reducing Western Blot	3ug/mL
ELISA	0.1 ug/mL (A450=0.2)
Immunoprecipitation	Decide by use
Supershift Assay	Not yet tested
Chromatin immunoprecipitation	Not yet tested
Immunohistochemistry	Decide by use



Rat / Cerebellum

Storage Store at 2 - 8 °C up to one month. For long-term storage, the solution may be frozen in working aliquots. Repeated freezing and thawing is not recommended. Storage in a frost-free freezer is not recommended.

Reference

Notes Sodium azide may react with lead and copper plumbing to form explosive metal azides. Flush with large amounts of water during disposal.

FOR RESEARCH ONLY. NOT FOR USE IN HUMANS.

Not for Diagnostic or Therapeutic use. Purchase of this product does not include or carry any right to resell or transfer this product either as a stand-alone product or as a component of another product. Any use of this product other than the permitted use without the express written consent of Perseus Proteomics Inc. is prohibited.

MADE IN JAPAN

Apr 17, 2008

Distributed by

SCETI SCETI K.K.

3-6-7 Kasumigaseki, Chiyoda-ku, Tokyo 100-0013, Japan
Tel +81(3) 5510-2347 Fax +81(3) 5510-0133
URL: <http://www.sceti.co.jp/export/> e-mail: exp-pet@sceti.co.jp

Manufactured by

PPMX
PERSEUS PROTEOMICS

Perseus Proteomics Inc.

4-7-6 Komaba, Meguro-ku, Tokyo 153-0041, Japan
URL: <http://www.ppmx.com>