

Anti human ERR gamma mouse monoclonal antibody

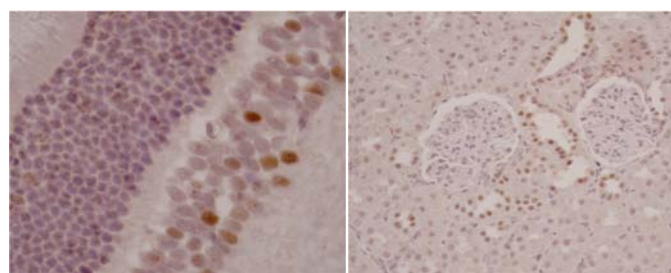
ERR gamma: Estrogen-Related Receptor gamma

Code No	PP-H6812-00 old No. 2ZH6812H
Clone No.	H6812
Lot.	A-1
Concentration	1 mg/mL
Volume	100 uL
Ig Class	G2a
Description	Estrogen-related receptor gamma (ERRg, ESRRG; NR3B3) is a member of orphan nuclear receptor. ERRg is expressed in brain, kidney, testis, lung, adrenal gland, pancreas, placenta or bone marrow. ERRg was shown to be located in the critical region for Usher's syndrome.
Nomenclature	NR3B3
Genbank	AF058291
Origin	Produced in BALB/c mouse ascites after inoculation with hybridoma of mouse myeloma cells (NS-1) and spleen cells derived from a BALB/c mouse immunized with Baculovirus-expressed recombinant human ERR gamma (2-100 aa) .
Specificity	This antibody specifically recognizes human ERR gamma and cross reacts with mouse and rat ERR gamma. This antibody does not recognize human ERR alpha and beta.
Purification	Ammonium sulfate fractionation
Formulation	Physiological saline with 0.1% NaN ₃ as a preservative.

Application / Recommended Concentration

In order to obtain the best results, optimal working dilutions should be determined by each individual user.

Western Blot	1 ug/mL
Non reducing Western Blot	Not yet tested
ELISA	1.7 ug/mL (A450=0.5)
Immunoprecipitation	Decide by use
Supershift Assay	Not yet tested
Chromatin immunoprecipitation	Not yet tested
Immunohistochemistry	10µg/mL



Rat inner nuclear layer of the retina Rat kidney distal convoluted tubule

Storage Store at 2 - 8 °C up to one month. For long-term storage, the solution may be frozen in working aliquots. Repeated freezing and thawing is not recommended. Storage in a frost-free freezer is not recommended.

Reference Jun Qin, *et al.* Developmental Dynamics, 2007, 236: 810-820

Notes Sodium azide may react with lead and copper plumbing to form explosive metal azides. Flush with large amounts of water during disposal.

FOR RESEARCH ONLY. NOT FOR USE IN HUMANS.

Not for Diagnostic or Therapeutic use. Purchase of this product does not include or carry any right to resell or transfer this product either as a stand-alone product or as a component of another product. Any use of this product other than the permitted use without the express written consent of Perseus Proteomics Inc. is prohibited.

MADE IN JAPAN

Apr 17, 2008

Distributed by

SCETI SCETI K.K.

3-6-7 Kasumigaseki, Chiyoda-ku, Tokyo 100-0013, Japan
Tel +81(3) 5510-2347 Fax +81(3) 5510-0133
URL: <http://www.sceti.co.jp/export/> e-mail: exp-pet@sceti.co.jp

Manufactured by

PPMX PERSEUS PROTEOMICS Perseus Proteomics Inc.

4-7-6 Komaba, Meguro-ku, Tokyo 153-0041, Japan
URL: <http://www.ppmx.com>