

## Anti human ER alpha mouse monoclonal antibody

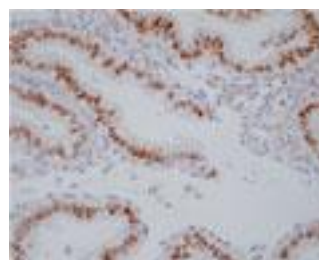
ER alpha: Estrogen Receptor alpha

<b>Code No</b>	PP-H4624-00 old No. 2ZH4624H
<b>Clone No.</b>	H4624
<b>Lot.</b>	A-1
<b>Concentration</b>	1 mg/mL
<b>Volume</b>	100 uL
<b>Ig Class</b>	G2a
<b>Description</b>	Estrogen receptor alpha (ERα, ER; NR3A1) is a member of steroid receptor (AR, GR, MR, PR). The natural ligand for ER is the classical estrogenic compound 17β-estradiol. ERα is expressed in a wide variety of tissues. Expression was found at variable levels in bones, in uterus, bladder, ovary, prostate, testis, epididymis, kidney, breast, heart, vessel wall, pituitary and hypothalamus. ER has a variety of central physiological roles, including those involved in maintenance of the reproductive, cardiovascular, musculoskeletal and central nervous systems. ERα has been shown to form homodimers as well as heterodimers with ERβ. Both ERα and ERβ can give rise to numerous isoforms.
<b>Nomenclature</b>	NR3A1
<b>Genbank</b>	M12674
<b>Origin</b>	Produced in BALB/c mouse ascites after inoculation with hybridoma of mouse myeloma cells (NS-1) and spleen cells derived from a BALB/c mouse immunized with Baculovirus-expressed recombinant human ER alpha (2-180 aa) .
<b>Specificity</b>	This antibody specifically recognizes human ER alpha and cross reacts with mouse and rat ER alpha. This antibody does not recognize human ER beta.
<b>Purification</b>	Ammonium sulfate fractionation
<b>Formulation</b>	Physiological saline with 0.1% NaN <sub>3</sub> as a preservative.

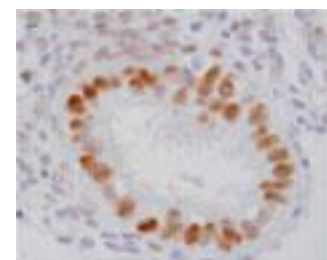
### Application / Recommended Concentration

In order to obtain the best results, optimal working dilutions should be determined by each individual user.

<b>Western Blot</b>	1 ug/mL
<b>Non reducing Western Blot</b>	Not yet tested
<b>ELISA</b>	0.3 ug/mL (A450=0.3)
<b>Immunoprecipitation</b>	Decide by use
<b>Supershift Assay</b>	Not yet tested
<b>Chromatin immunoprecipitation</b>	Not yet tested
<b>Immunohistochemistry</b>	10-20 ug/mL



Human Uterus  
Endometrial epithelium cell  
paraffin section



Human Uterus  
Endometrial epithelium cell  
paraffin section

<b>Storage</b>	Store at 2 - 8 °C up to one month. For long-term storage, the solution may be frozen in working aliquots. Repeated freezing and thawing is not recommended. Storage in a frost-free freezer is not recommended.
----------------	---

### Reference

<b>Notes</b>	Sodium azide may react with lead and copper plumbing to form explosive metal azides. Flush with large amounts of water during disposal.
--------------	---

FOR RESEARCH ONLY. NOT FOR USE IN HUMANS.

Not for Diagnostic or Therapeutic use. Purchase of this product does not include or carry any right to resell or transfer this product either as a stand-alone product or as a component of another product. Any use of this product other than the permitted use without the express written consent of Perseus Proteomics Inc. is prohibited.

**MADE IN JAPAN**

Apr 17, 2008

Distributed by

**SCETI** SCETI K.K.

3-6-7 Kasumigaseki, Chiyoda-ku, Tokyo 100-0013, Japan  
Tel +81(3) 5510-2347 Fax +81(3) 5510-0133  
URL: <http://www.sceti.co.jp/export/> e-mail: [exp-pet@sceti.co.jp](mailto:exp-pet@sceti.co.jp)

Manufactured by

**PPMX** PERSEUS PROTEOMICS Perseus Proteomics Inc.

4-7-6 Komaba, Meguro-ku, Tokyo 153-0041, Japan  
URL: <http://www.ppmx.com>