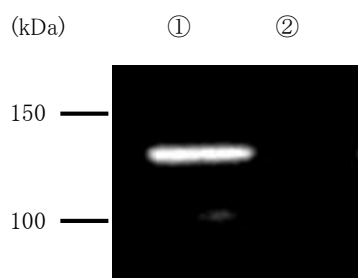


## Anti Phototropin 1 Polyclonal Antibody

Package Size	25 $\mu$ g (100 $\mu$ L / vial)
Format	Rabbit polyclonal antibody 0.25mg/mL
Buffer	PBS [containing 2% Block Ace as a stabilizer, 0.1% Proclin as a bacteriostat]
Storage	Store below -20°C Once thawed, store at 4°C. Repeated freeze-thaw cycles should be avoided.
Purification method	This antibody was purified from rabbit serum immunized with partial peptide of Arabidopsis Phototropin 1 by peptide affinity chromatography.
Working dilution	For Western blotting ; 0.5~1.0 $\mu$ g/mL This Antibody does not crossreact with Phototropin2

A)



### Western blotting

A)

Sample : Arabidopsis leaves

① Wild tipe

② Delection Mutant for *phot1/phot2*

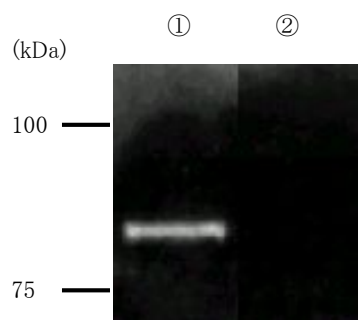
B)

Sample : GST-GFP fusion protein , expressed in Escherichia coli

① GST-GFP-PHOT1 N terminal

② GST-GFP-PHOT2 N terminal

B)



### **Preparation of antibodies and instruction :**

Kagawa T, Kimura M

Life Science and Bioengineering,

Graduate School of Life and Environmental Science,

University of Tsukuba

**Anti Phototropin 1 Polyclonal Antibody****【Reference】**

1. Wada M. et al. : Annu Rev Plant Biol. 2003;54:455-68
2. Kagawa T. : J Plant Res. 2003 Feb;116(1):77-82
3. Kagawa T. et al. : Plant Cell Physiol. 2002 Apr;43(4):367-71
4. Briggs WR. et al. : Plant Cell. 2001 May;13(5):993-7
5. Kasahara M. et al. : Nature. 2002 Dec;420(6917):829-32
6. Kinoshita T. et al. : Nature. 2001 Dec;414(6864):656-60
7. Kagawa T. et al. : Science. 2001 Mar 16;291(5511):2138-41

**Supplier****SCETI**  
**SCETI K.K.**

3-6-7 Kasumigaseki, Chiyoda-ku, Tokyo 100-0013, JAPAN  
Tel +81(3) 5510-2347 Fax +81(3) 5510-0133  
URL: <http://www.sceti.jp/export/> e-mail: [exp-pet@sceti.co.jp](mailto:exp-pet@sceti.co.jp)