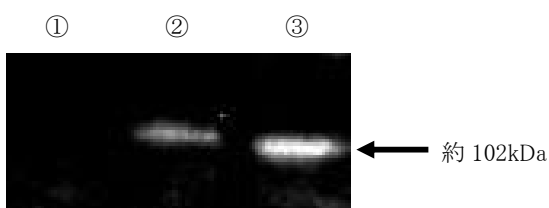


Anti Phototropin 2 Polyclonal Antibody

Package Size	25 μ g (100 μ L / vial)
Format	Rabbit polyclonal antibody 0.25mg/mL
Buffer	PBS [containing 2% Block Ace as a stabilizer, 0.1% Proclin as a bacteriostat]
Storage	Store below -20°C Once thawed, store at 4°C. Repeated freeze-thaw cycles should be avoided.
Purification method	This antibody was purified from rabbit serum immunized with partial peptide of Arabidopsis PHOT2 by peptide affinity chromatography.
Working dilution	For western blotting ;0.1~0.3 μ g/mL

Western blotting

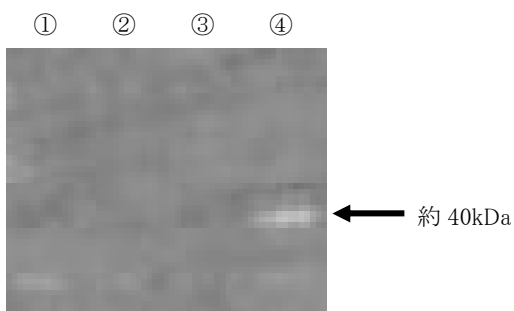
A)



A) Sample : Arabidopsis leaves

- ① Mutant type lacking PHOT2
- ② Hetero type
- ③ Wild type

B)



B) Sample : GST fusion protein , expressed in Escherichia coli

- ① GST-PHOT1 N terminal (without IPTG induction)
- ② GST-PHOT1 N terminal (with IPTG induction)
- ③ GST-PHOT2 N terminal (without IPTG induction)
- ④ GST-PHOT2 N terminal (with IPTG induction)

Preparation of antibodies and instruction :

Higashi T, Kagawa T, Kimura M
Life Science and Bioengineering,
Graduate School of Life and Environmental Science,
University of Tsukuba

Anti Phototropin 2 Polyclonal Antibody**【Reference】**

1. Wada M. et al. : Annu Rev Plant Biol. 2003;54:455-68
2. Kagawa T. : J Plant Res. 2003 Feb;116(1):77-82
3. Kagawa T. et al. : Plant Cell Physiol. 2002 Apr;43(4):367-71
4. Briggs WR. et al. : Plant Cell. 2001 May;13(5):993-7
5. Kasahara M. et al. : Nature. 2002 Dec;420(6917):829-32
6. Kinoshita T. et al. : Nature. 2001 Dec;414(6864):656-60
7. Kagawa T. et al. : Science. 2001 Mar 16;291(5511):2138-41

Supplier**SCETI****SCETI K.K.**

3-6-7 Kasumigaseki, Chiyoda-ku, Tokyo 100-0013, JAPAN

Tel +81(3) 5510-2347 Fax +81(3) 5510-0133

URL: <http://www.sceti.jp/export/> e-mail: exp-pet@sceti.co.jp