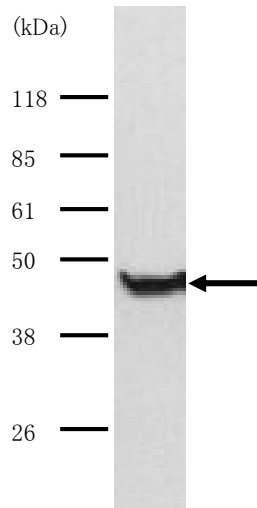


Anti CapG Polyclonal Antibody

CapG : macrophage-capping protein

Package Size	25μg (100μL / vial)
Format	Rabbit polyclonal antibody 0.25mg/mL
Buffer	PBS [containing 2% Block Ace as a stabilizer, 0.1% Proclin as a bacteriostat]
Storage	Store below -20°C Once thawed, store at 4°C. Repeated freeze-thaw cycles should be avoided.
Purification method	This antibody was purified from rabbit serum immunized with GST-human CapG by GST affinity chromatography.
Working dilution	For western blotting ;0.1~0.5μg/mL This antibody reacts with mouse CapG.



Western blotting

Sample : Human fibroblast extract

Dr. Yutsudo, M

At Research Institute for Microbial Diseases, Osaka University Japan

Anti Cap G Polyclonal Antibody

CapG : macrophage-capping protein

【Reference】

1. Dabiri GA. et al. : J Biol Chem. 1992 Aug 15;267(23):16545-52
2. Witke W. et al. : J Cell Biol. 2001 Aug 20;154(4):775-84
3. Pellicieux C. et al. : J Biol Chem. 2003 Aug 1;278(31):29136-44

Supplier

SCETI
SCETI K.K.

3-6-7 Kasumigaseki, Chiyoda-ku, Tokyo 100-0013, JAPAN
Tel +81(3) 5510-2347 Fax +81(3) 5510-0133
URL: <http://www.sceti.jp/export/> e-mail: exp-pet@sceti.co.jp