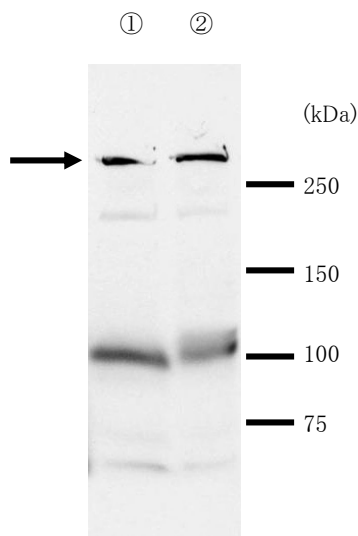


Anti MDC1(NFBD1/KIAA0170) Polyclonal Antibody**MDC1 : mediator of DNA damage checkpoint protein 1**

Package Size	25 μ g (100 μ L / vial)
Format	Rabbit polyclonal antibody 0.25mg/mL
Buffer	PBS [containing 2% Block Ace as a stabilizer, 0.1% Proclin as a bacteriostat]
Storage	Store below -20°C Once thawed, store at 4°C. Repeated freeze-thaw cycles should be avoided.
Purification method	This antibody was purified from rabbit serum immunized with partial peptide of human MDC1 by peptide affinity chromatography.
Working dilution	For western blotting ; 1~5 μ g/mL

Western blotting

Sample :

- ① 293T cell lysate
- ② HeLa cell lysate

Preparation of antibodies and instruction :

Miki Y, Yoshida K

Department of Molecular Pathogenesis, Division of Pathophysiology,
Medical Research Institute, Tokyo Medical and Dental University

Anti MDC1(NFBD1/KIAA0170) Polyclonal Antibody

MDC1 : mediator of DNA damage checkpoint protein 1

【Reference】

1. Lou Z. et al. : J Biol Chem. 2003 Apr 18;278(16):13599-602
2. Peng A. et al. : J Biol Chem. 2003 Mar 14;278(11):8873-6
3. Xu X. et al. : J Biol Chem. 2003 Mar 7;278(10):8795-803
4. Goldberg M. et al. : Nature. 2003 Feb 27;421(6926):952-6
5. Lou Z. et al. : Nature. 2003 Feb 27;421(6926):957-61
6. Stewart GS. et al. : Nature. 2003 Feb 27;421(6926):961-6
7. Shang YL. et al. : J Biol Chem. 2003 Feb 21;278(8):6323-9

Supplier

SCETI
SCETI K.K.

3-6-7 Kasumigaseki, Chiyoda-ku, Tokyo 100-0013, JAPAN

Tel +81(3) 5510-2347 Fax +81(3) 5510-0133

URL: <http://www.sceti.jp/export/> e-mail: exp-pet@sceti.co.jp