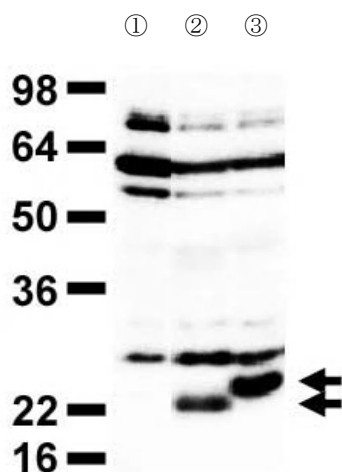


Anti Human APH-1a Polyclonal Antibody

Package Size	25 μ g (100 μ L / vial)
Format	Rabbit polyclonal antibody 0.25mg/mL
Buffer	PBS [containing 2% Block Ace as a stabilizer, 0.1% Proclin as a bacteriostat]
Storage	Store below -20°C Once thawed, store at 4°C. Repeated freeze-thaw cycles should be avoided.
Purification method	This antibody was purified from rabbit serum immunized with partial peptide of human APH-1a by peptide affinity chromatography.
Working dilution	For Western blotting ; 3~10 μ g/mL



Western blotting

Sample : Transfected N2a Cell lysate

- ① mock
- ② APH-1aS (247 amino acids)
- ③ APH-1aL (265 amino acids)

Preparation of antibodies and instruction :

Iwatsubo T, Tomita Y

Department of Neuropathology and neuroscience

Graduate School of Pharmaceutical Science, University of TOKYO

Anti Human APH-1a Polyclonal Antibody**【Reference】**

1. Fortini ME. : Nat Rev Mol Biol. 2002 3: 673-684
2. Goutte C. et al. : Proc Natl Acad Sci USA. 2002 99: 775-779
3. Francis R. et al. : Dev Cell. 2002 3: 85-97
4. Lee SF. et al. : J Biol Chem. 2003 277: 45013-45019
5. Takasugi N. et al. : Nature 2003 422: 438-441

Supplier**SCETI****SCETI K.K.**

3-6-7 Kasumigaseki, Chiyoda-ku, Tokyo 100-0013, JAPAN

Tel +81(3) 5510-2347 Fax +81(3) 5510-0133

URL: <http://www.sceti.jp/export/> e-mail: exp-pet@sceti.co.jp