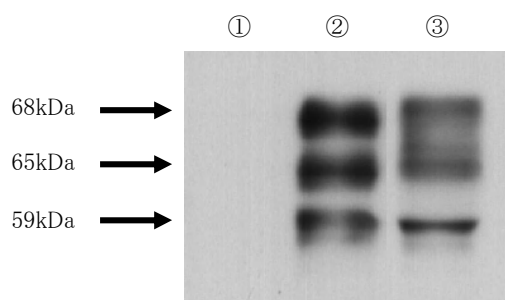


**Anti Tau Phospho-Specific (Ser416) Polyclonal Antibody**

Package Size	25 $\mu$ g (100 $\mu$ L / vial)
Format	Rabbit polyclonal antibody 0.25mg/mL
Buffer	PBS [containing 2% Block Ace as a stabilizer, 0.1% Proclin as a bacteriostat]
Storage	Store below -20°C
	Once thawed, store at 4°C. Repeated freeze-thaw cycles should be avoided.
Purification method	This antibody was purified from rabbit serum immunized with partial peptide of human Tau Phospho-Specific (Ser416) by phosphorylated peptide affinity column. And then, the antibody against unphosphorylated peptide was removed by unphosphorylated peptide affinity column.
Working dilution	For western blotting ; 0.5~2 $\mu$ g/mL



Western blotting

Sample :

- ① Rat brain homogenates 7  $\mu$ g  
The sample was prepared in the absence of phosphatase inhibitor.
- ② Rat brain homogenates 7  $\mu$ g  
The sample was prepared in the presence of phosphatase inhibitor
- ③ Rat brain homogenates 30  $\mu$ g  
The sample was prepared in the absence of phosphatase inhibitor, and then it was phosphorylated by CaM kinase II

**Preparation of antibodies and instruction :**

Yamamoto H  
Department of Molecular Pharmacology,  
Kumamoto University Graduate school of Medical Science

## Anti Tau Phospho-Specific (Ser416) Polyclonal Antibody

### 【Reference】

1. Yamamoto H. et al. : J Neurochem. 1983 Oct;41(4):1119-25
2. Yamamoto H. et al. : Arch Biochem Biophys. 2002 Dec 15;408(2):255-62

### Supplier

**SCETI**  
**SCETI K.K.**

3-6-7 Kasumigaseki, Chiyoda-ku, Tokyo 100-0013, JAPAN  
Tel +81(3) 5510-2347 Fax +81(3) 5510-0133  
URL: <http://www.sceti.jp/export/> e-mail: [exp-pet@sceti.co.jp](mailto:exp-pet@sceti.co.jp)