

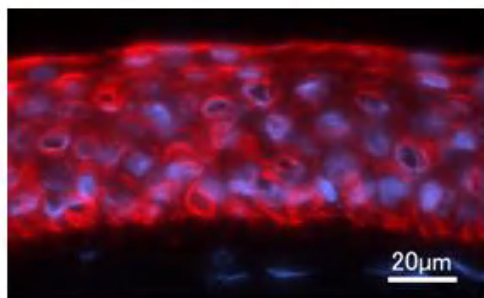
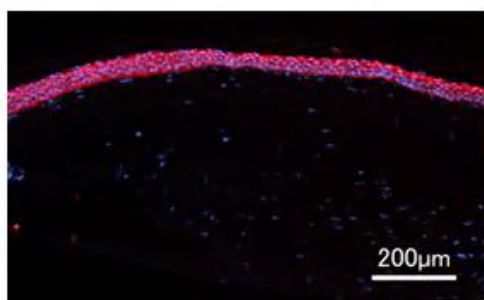
Anti Keratin 12 Polyclonal Antibody

Keratin is one of the major components of intermediate filament cytoskeleton of epithelial cells. Keratin 12 is known as a differentiation marker specific for ocular surface epithelia.

This antibody was obtained from rabbit serum immunized with partial peptide of rabbit Keratin 12 and partially purified with affinity chromatography.

This antibody cross-reacts with human and mouse Keratin 12.

Package Size	25 μ g (100 μ L/vial)
Format	Rabbit polyclonal antibody 0.25 mg/mL
Buffer	PBS [containing 2% Block Ace as a stabilizer, 0.1% Proclin as a bacteriostat]
Immunogen	Synthetic peptide of rabbit Keratin 12
Raised in	Rabbit
Clonality	Polyclonal
Purification method	Peptide affinity chromatography
Cross-reactivity	Human, Mouse
Storage	Below -20°C in undiluted aliquots. Avoid repeated freeze/thaw cycles.
Working dilution	Immunohistochemistry : 2 μ g/mL



Immunohistochemistry

Sample : Human Cornea

Preparation of antibodies and instruction :
Dr. Tano Y., Dr. Nishida K. and Dr. Watanabe K.
at Department of Ophthalmology,
Osaka University Medical School

Anti Keratin 12 Polyclonal Antibody

【Reference】

1. Liu CY. et al. : Curr Eye Res. 1993 Nov;12(11):963-74
2. Nishida K. et al. : Invest Ophthalmol Vis Sci. 1996 Aug;37(9):1800-9
3. Moyer PD. et al. : Differentiation. 1996 Mar;60(1):31-8.
4. Kinoshita S. et al. : Prog Retin Eye Res. 2001 Sep;20(5):639-73

Supplier

SCETI
SCETI K.K.

3-6-7 Kasumigaseki, Chiyoda-ku, Tokyo 100-0013, JAPAN
Tel +81(3) 5510-2347 Fax +81(3) 5510-0133
URL: <http://www.sceti.jp/export/> e-mail: exp-pet@sceti.co.jp