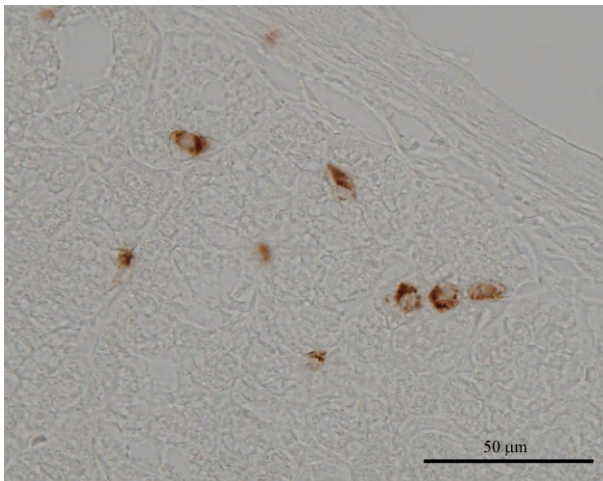


## Anti Rat Ghrelin Polyclonal Antibody

Package Size	25 $\mu$ g (100 $\mu$ L / vial)
Format	Rabbit polyclonal antibody 0.25mg/mL
Buffer	PBS [containing 2% Block Ace as a stabilizer, 0.1% Proclin as a bacteriostat]
Storage	Store below -20°C Once thawed, store at 4°C. Repeated freeze-thaw cycles should be avoided.
Purification method	This antibody was purified from rabbit serum immunized with partial peptide of Rat Ghrelin by peptide affinity chromatography.
Working dilution	For Immunohistochemistry ; 0.01 $\mu$ g/mL~



### Immunohistochemistry

Sample : Rat Stomach

Preparation of antibodies and instruction :

Yamazaki M, Sakata I

Dep. of Regulation- Biology, Faculty of Science, Saitama University

## Anti Rat Ghrelin Polyclonal Antibody

### 【Reference】

1. Kojima M. et al. : Nature 1999 Dec 9;402(6762):656-60
2. Nakazato M. et al. : Nature 2001 Jan 11;409(6817):194-8
3. Sakata I. et al. : Neurosci Lett. 2003 May 22;342(3):183-6

Supplier

**SCETI**  
**SCETI K.K.**

3-6-7 Kasumigaseki, Chiyoda-ku, Tokyo 100-0013, JAPAN  
Tel +81(3) 5510-2347 Fax +81(3) 5510-0133  
URL: <http://www.sceti.jp/export/> e-mail: [exp-pet@sceti.co.jp](mailto:exp-pet@sceti.co.jp)