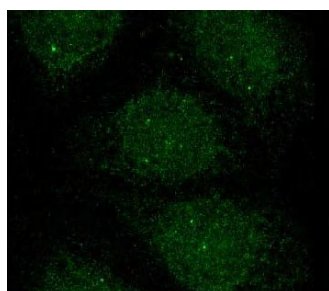


Anti Human Ajuba Polyclonal Antibody

Aurora-A(Aurora-A/STK-15/Aik) encoding a centrosome-associated Ser/Thr kinase, is amplified and overexpressed in many cancer cell types, and is involved in the induction of centrosome duplication-distribution abnormalities and aneuploidy in mammalian cells. In vitro transformation activity of Aurora-A suggested to be a potential oncogene. Recent research elucidated that Ajuba, Aurora-A binding protein, induces the autophosphorylation and consequent activation of Aurora-A . In the future this antibody will contribute the research progress whether Ajuba and Aurora-A are involved in tumorigenesis. This antibody is useful for immunoprecipitation and immunocytochemistry.

Package Size	25 μ g (100 μ L/vial)
Format	Rabbit polyclonal antibody 0.25mg/mL
Buffer	PBS [containing 2% Block Ace as a stabilizer, 0.1% Proclin as a bacteriostat]
Storage	Below -20°C
Purification method	This antibody was purified from rabbit serum by affinity chromatography.
Working dilution	For Immunoprecipitation ; 10 μ g/mL For Immunocytochemistry ; 2~5 μ g/mL



Immunocytochemistry

Sample : HeLa Cell

Preparation of antibodies and instruction :

Dr. Saya H. and Dr. Hirota T. at Department of Tumor Genetics and Biology, Kumamoto University School of medicine.

Anti Human Ajuba Polyclonal Antibody**【Reference】**

1. Bischoff JR. et al. : Trends cell Biol. 1999 Nov;9(11):454-9
2. Descamps S. et al. : Sci STKE 2001 Mar 13;2001(73):PE1
3. Goyal RK. et al. : Mol Cell Biol. 1999 Jun;19(6):4379-89
4. Marie H. et al. : Mol Cell Neurosci. 2002 Feb;19(2):152-64

Supplier

SCETI
SCETI K.K.

3-6-7 Kasumigaseki, Chiyoda-ku, Tokyo 100-0013, JAPAN
Tel +81(3) 5510-2347 Fax +81(3) 5510-0133
URL: <http://www.sceti.jp/export/> e-mail: exp-pet@sceti.co.jp