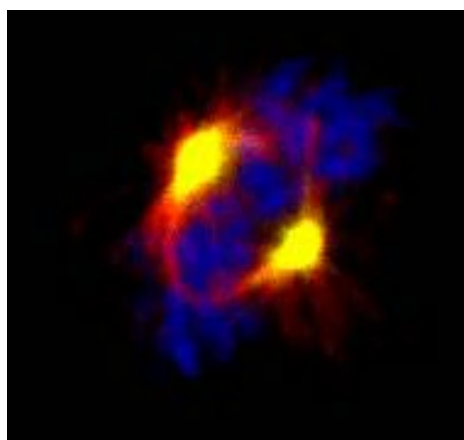


Anti Human Aurora-A Polyclonal Antibody

Aurora-A (Aurora-A/STK-15/Aik) encoding a centrosome-associated kinase, is amplified and overexpressed in many cancer cell types, and is involved in the induction of centrosome duplication-distribution abnormalities and aneuploidy in mammalian cells. So that, Aurora-A is a potential oncogene. Aurora family have been identified three types (Aurora-A, B, C) which has high homology domain in C terminal region. Aurora family is indispensable kinase that regulate the structure and function of centrosomes and spindle. Aurora-A could be one of targeting molecule of anti-cancer therapy.

This antibody was established from the purified serum of the immunized rabbit with N terminal region of Aurora-A and did not show any cross- reactivity to Aurora-B and Aurora-C. This antibody is useful for western blotting and immunohistochemistry.

Package Size	25 μ g (100 μ L/vial)
Format	Rabbit polyclonal antibody 0.25mg/mL
Buffer	Block Ace as a stabilizer, containing 0.1% Proclin as a bacteriostat
Storage	Below -20°C until needed.
Purification method	This antibody was purified from rabbit serum by affinity chromatography.
Working dilution	For western blotting ; 0.5~2 μ g/mL For Immunohistochemistry ; 1~2 μ g/mL



green : Aurora-A

blue : DNA

Immunocytochemistry

Sample : HeLa Cell

Preparation of antibodies and instruction

Dr.Saya H. and Dr.Marumoto T. at Department of Tumor Genetics and Biology, Kumamoto University School of medicine.

Anti Human Aurora-A Polyclonal Antibody

【Reference】

- 1.Giet R, Prigent C.:J Cell Sci 1999 Nov;112(Pt21):3591-601
- 2.Bischoff JR,et al.:EMBO J 1988 Jun 1;17(11):3052-65
- 3.Zhou H,et al.:Nat Genet 1988 Oct;20(2):189-93
- 4.Lim Shen Kiat,et al.:J Biol Chem 2002 Mar 22;277(12):10719-10726
- 5.Goepfert TM,et al.:Cancer Res 2002 Jul 15;62(14):4115-22

Supplier

SCETI
SCETI K.K.

3-6-7 Kasumigaseki, Chiyoda-ku, Tokyo 100-0013, JAPAN
Tel +81(3) 5510-2347 Fax +81(3) 5510-0133
URL: <http://www.sceti.jp/export/> e-mail: exp-pet@sceti.co.jp