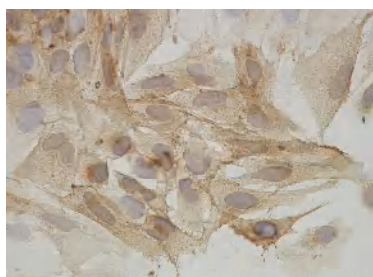


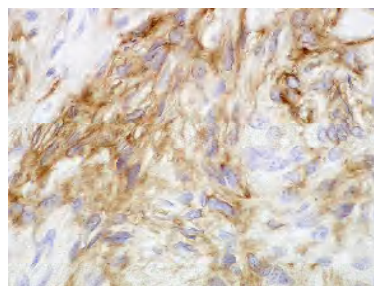
Anti Rat MFH Monoclonal Antibody (Clone No. A3)

Package Size	50 μ g (200 μ L / vial)
Format	Mouse monoclonal antibody 0.25mg/mL
Buffer	PBS [containing 2% Block Ace as a stabilizer, 0.1% Proclin as a bacteriostat]
Storage	Store below -20 $^{\circ}$ C Once thawed, store at 4 $^{\circ}$ C. Repeated freeze-thaw cycles should be avoided.
Clone No.	A3
Sub class	IgG1
Purification method	The splenic lymphocytes from BALB/c mouse, immunized with MT-8 were fused to myeloma P3X63 Ag8.653 cells. The cell line (A3) with positive reaction was grown in ascitic fluid of BALB/c mouse, from which the antibody was purified by Protein G affinity chromatography.
Use	Immunohistochemistry(culture cell: acetone fixed, tissue: paraffin section after Zamboni's fixative fixed), Western blotting
Working dilution	For Immunohistochemistry ; 1~2 μ g/mL For Western blotting ; 1~2 μ g/mL

Positive Sample of Immunohistochemistry



Rat MFH culture cell line (MT-9)



The MT-9 tumor tissue

Drs. Yamate, J. at Laboratory of Veterinary Pathology,
Graduate School of Agriculture and Biological Sciences, Osaka Prefecture University

Anti Rat MFH Monoclonal Antibody (Clone No. A3)**【Reference】**

1. Yamate, J., Tajima, M., Togo, M., Shibuya, K., Ihara, M. and Kudow, S. (1991). Heterogeneity of cloned cell lines established from a transplantable rat malignant fibrous histiocytoma. *Jpn. J. Cancer Res.* 82: 298-307.
2. Kumagai, D., Yamate, J., Tajima, T., Tsukamoto, Y., Yasui, H., Kuwamura, M., Kotani, T., and Sakuma, S. (2000). Distribution of cells labeled by a monoclonal antibody (A3) against a cloned cell line derived from a rat malignant fibrous histiocytoma. *J. Comp. Pathol.* 123: 77-87.

Supplier

SCETI
SCETI K.K.

3-6-7 Kasumigaseki, Chiyoda-ku, Tokyo 100-0013, JAPAN
Tel +81(3) 5510-2347 Fax +81(3) 5510-0133
URL: <http://www.sceti.jp/export/> e-mail: exp-pet@sceti.co.jp