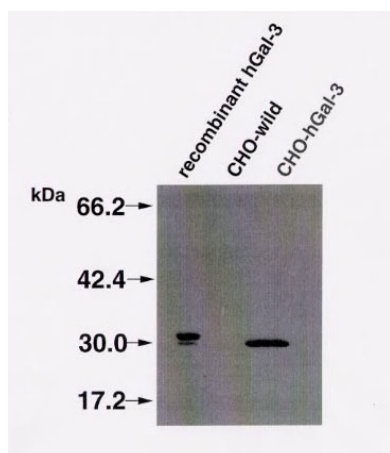


Anti Human Galectin 3 Polyclonal Antibody

The galectins are a family of carbohydrate-binding proteins that are distributed widely in metazoan organisms. Many galectin family members are detected primarily intracellularly in most of the systems studied, although certain members can be found both inside and outside of cells. Galectin-3 interacts with beta-galactoside residues of several cell surface and matrix glycoproteins through the carbohydrate recognition domain and is also capable of peptide-peptide associations mediated by its N-terminus domain. Recently, it has been demonstrated that galectin-3 is a new member of AGEs-receptor complex. (Mol.Med.1:634-646,1995)

This antibody is affinity purified rabbit polyclonal antibody raised against recombinant human galectin-3 and should be used for western blotting.

Package Size	100 μ g (400 μ L / vial)
Format	Rabbit polyclonal antibody ,0.25mg/mL
Buffer	Block Ace as a stabilizer, containing 0.1% Proclin as a bacteriostat
Storage	Below -20°C until needed. Once thawed, store at 4°C. Repeated freeze-thaw cycles should be avoided.
Purification method	This antibody was purified from rabbit serum by Protein G affinity chromatography.

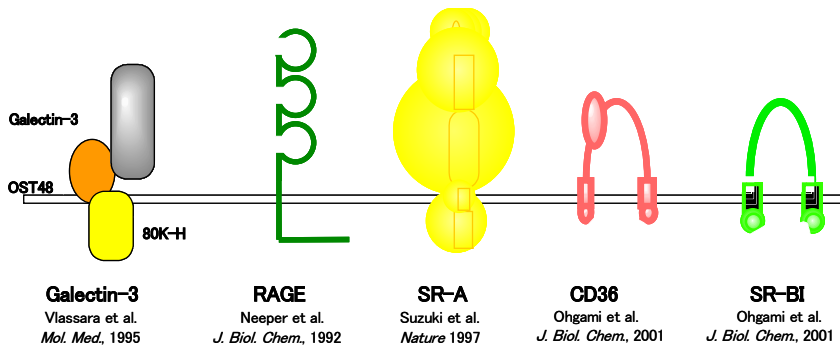


Western blotting
 Sample: Cell lysates of
 Gelectin-3 CHO or mock
 CHO cells (10 μ g/lane)

Preparation of antibodies and instruction:
 Prof. S Horiuch.,
 Department of Biochmistry Kumamoto University
 School of Medicine

Anti Human Galectin 3 Polyclonal Antibody

【 AGEs receptors 】



【Reference】

1. .Zhu,W.et al ;*Biochem Biophys Res Commun* 280:1183-1188,(2001)
2. Vlassara H.,et al: *Mol Med* 1(6),634-646(1995)
3. Sarafian et al:*Int.J.Cancer* 75,105-111(1998)
4. Hirabayashi et al: Tanpakushitu Kakusan Koso, Vol.43 No.16,(1998)
5. Nangia-Makker et al: *AJP* March Vol.156.No3 (2000)

Supplier

SCETI
SCETI K.K.

3-6-7 Kasumigaseki, Chiyoda-ku, Tokyo 100-0013, JAPAN
Tel +81(3) 5510-2347 Fax +81(3) 5510-0133
URL: <http://www.sceti.jp/export/> e-mail: exp-pet@sceti.co.jp