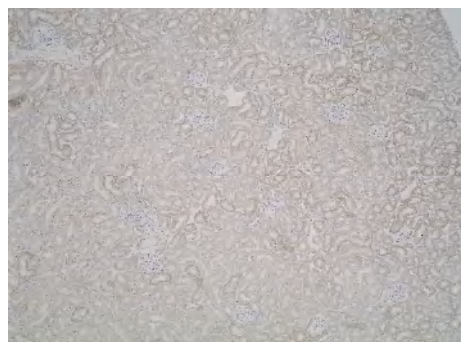


KG406 Anti Mouse Prei4 Polyclonal Antibody			
Primary Source	MGI:104898	Gene ID	74182
Type	Polyclonal	Keyword	
Immunogen	Partial peptide of Mouse Prei4	AU015213; mKIAA1434; 2310004G06Rik; 2310032D16Rik; Prei4 preimplantation protein 4	
Raised in	Rabbit		
Myeloma	-		
Clone number	-		
Isotype	-	Application	
Source	Rabbit serum	WB	Not tested
Purification notes	Antigen Affinity	IHC	5.0-10 µg/mL
Cross Reactivity	Not yet tested in other species.	ICC	Not tested
Concentration	0.25 mg/mL	ELISA	Not tested
Contents (Volume)	25 µg (100 µL/vial)	FCM	Not tested
Label	Unlabeled	Neutralization	Not tested
Buffer	PBS [containing 2 % Block Ace as a stabilizer, 0.1 % Proclin as a bacteriostat]	IP	Not tested
Storage	Store below -20 °C. Once thawed, store at 4 °C. Repeated freeze-thaw cycles should be avoided.		

Immunohistochemistry



Sample : Mouse cerebellum (paraffin section)



Sample : Mouse kidney (paraffin section)

WARNING AND PRECAUTION

1. Not for diagnostic use. The safety and efficacy of product in diagnostic or other clinical uses has not been established.
2. Harmful by inhalation, in contact with skin and if swallowed. Do not breathe dust. Avoid contact with skin and eyes.
3. If contact with skin and eyes, wash all affected areas with large volume of water. If inhaled remove to fresh air. In severe case obtain medical attention.
4. Wash hand thoroughly after handling the product.
5. Do not use this product if container is broken or some contaminants are detected.
6. When preserving the product, Close the container, ensure it does not fall aside or down.
7. Dispose of the container and expired reagents in accordance with federal, state and local government regulations.
8. Do not use the container and accessories of the product for other purpose.

取り扱い上の注意

この添付文書をよく読んでから使用して下さい。

1. 本品は研究用試薬であり、医薬品その他の目的にはご使用になれません。
2. 取り扱い中は皮膚、粘膜、着衣に触れたり、目に入らないように適切な措置を行って下さい。
3. 試薬が誤って目や口に入った場合には、水で十分に洗い流すなどの応急処置を行い、必要があれば医師の手当を受けて下さい。
4. 取り扱い後は手洗いを十分に行って下さい。
5. 容器の破損、異物混入等異常が認められた物は使用しないで下さい。
6. 試薬を保管する場合は、蓋をし、転倒落下防止を確実にし、指定の貯蔵方法で保管して下さい。
7. 使用後の容器は、廃棄物に関する規定に従って処理して下さい。
8. 容器、付属品等の他目的への転用は保証できません。