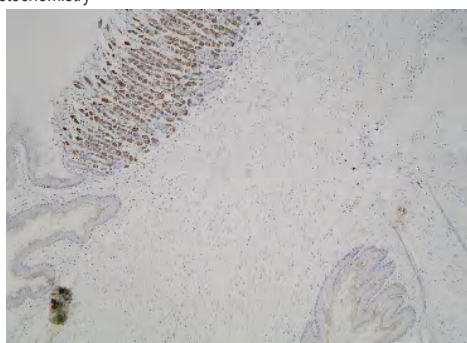
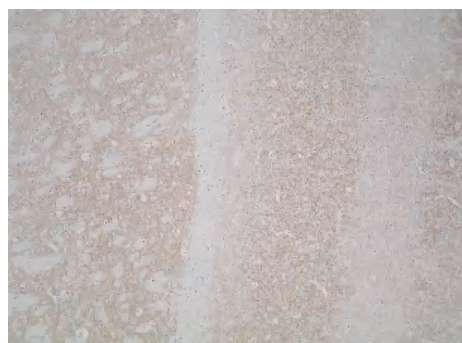


KG405 Anti Mouse Leprotl1 Polyclonal Antibody			
Primary Source	MGI:1915442	Gene ID	68192
Type	Polyclonal	Keyword	
Immunogen	Partial peptide of Mouse Leprotl1	A1854296; 1110067H13Rik; 1520402O14Rik; Leprotl1 leptin receptor overlapping transcript-like 1	
Raised in	Rabbit		
Myeloma	-		
Clone number	-		
Isotype	-	Application	
Source	Rabbit serum	WB	Not tested
Purification notes	Antigen Affinity	IHC	5.0-10 µg/mL
Cross Reactivity	Not yet tested in other species.	ICC	Not tested
Concentration	0.25 mg/mL	ELISA	Not tested
Contents (Volume)	25 µg (100 µL/vial)	FCM	Not tested
Label	Unlabeled	Neutralization	Not tested
Buffer	PBS [containing 2 % Block Ace as a stabilizer, 0.1 % Proclin as a bacteriostat]	IP	Not tested
Storage	Store below -20 °C. Once thawed, store at 4 °C. Repeated freeze-thaw cycles should be avoided.		

Immunohistochemistry



Sample : Mouse stomach (paraffin section)



Sample : Mouse cerebrum (paraffin section)

Note

Leprotl1 (leptin receptor overlapping transcript-like 1) is shown to be an integral membrane protein with three membrane domains. Its N-terminus points outside of plasma membrane and its C-terminus points inside.

Note

Leprotl1 (leptin receptor overlapping transcript-like 1) は 3 つの膜ドメインを持つ膜内在性タンパク質です。その N 末端は細胞膜の外側、C 末端は細胞膜内側に存在しています。

Reference

1 Huang Y. et al.: Cloning and characterization of a novel human leptin receptor overlapping transcript-like 1 gene (LEPROTL1).

Biochim Biophys Acta.
2001 Jan 26;1517(2):327-31.

WARNING AND PRECAUTION

- Not for diagnostic use. The safety and efficacy of product in diagnostic or other clinical uses has not been established.
- Harmful by inhalation, in contact with skin and if swallowed. Do not breathe dust. Avoid contact with skin and eyes.
- If contact with skin and eyes, wash all affected areas with large volume of water. If inhaled remove to fresh air. In severe case obtain medical attention.
- Wash hand thoroughly after handling the product.
- Do not use this product if container is broken or some contaminants are detected.
- When preserving the product, Close the container, ensure it does not fall aside or down.
- Dispose of the container and expired reagents in accordance with federal, state and local government regulations.
- Do not use the container and accessories of the product for other purpose.

取り扱い上の注意

この添付文書をよく読んでから使用して下さい。

- 本品は研究用試薬であり、医薬品その他の目的にはご使用になれません。
- 取り扱い中は皮膚、粘膜、着衣に触れたり、目に入らないように適切な措置を行って下さい。
- 試薬が誤って目や口に入った場合には、水で十分に洗い流すなどの応急処置を行い、必要があれば医師の手当を受けて下さい。
- 取り扱い後は手洗いを十分に行って下さい。
- 容器の破損、異物混入等異常が認められた物は使用しないで下さい。
- 試薬を保管する場合は、蓋をし、転倒落下防止を確実にし、指定の貯蔵方法で保管して下さい。
- 使用後の容器は、廃棄物に関する規定に従って処理して下さい。
- 容器、付属品等の他目的への転用は保証できません。