

**Anti-Lamin B Receptor antibody, affinity-purified (rabbit polyclonal)**

E70-301 50 u g

Lamins are nuclear membrane proteins that serve to maintain nuclear structure and functions. Lamin B receptor (LBR) is localized in the nuclear envelope inner membrane and anchors the lamina and heterochromatin to the membrane (1). It may mediate interaction between chromatin and lamin B (2). The interaction with lamin and chromatin is regulated by phosphorylation.

**Applications**

- 1) Western blotting (0.2~1 ug /ml)
  - 2) Immunoprecipitation.
  - 3) Indirect immuno-fluorescence staining
- Other applications were not tested

**Properties of the product**

**Antigen:** Highly purified recombinant mouse LBR (amino acids 1-81)

**Antibody:** Affinity-purified with the recombinant LBR

**Reactivity:** Mouse and human. Not tested with other species

**Form:** 1 mg/ml in PBS, 50% glycerol, 0.05% sodium azide (and trace of ammonium sulfate)

**Storage:** -20°C (long period; -80°C)

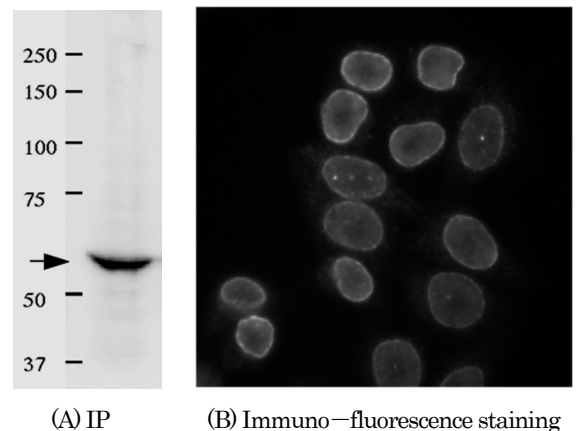
**Reference**

1. Worman HJ, et al (1988) A lamin B receptor in the nuclear envelope. *Pro.Natl.Acad.Sci. USA* 85:8531
2. Pyrpasopoulou A, et al. (1996) The lamin B receptor (LBR) provides essential chromatin docking sites at the nuclear envelope. *EMBO J.* 15: 7108-19

**Figure. Identification of LBR in HeLa cell  
by immuno-precipitation and immuno-staining  
with anti-LBR antibody (1-81)**

A) Identification of LBR in crude extract of HeLa cells by immuno-precipitation followed by western blotting

B) Indirect immuno-fluorescence staining of HeLa cells



<Distributed by >: SCETI K.K. DF Kasumigaseki Place, 3-6-7 Kasumigaseki,  
Chiyoda-ku Tokyo 100-0013 JAPAN  
Tel: +81-3-5510-2347 Fax: +81-3-5510-0134  
E-mail: [exp-pet@sceti.co.jp](mailto:exp-pet@sceti.co.jp) URL: [www.sceti.co.jp/export/](http://www.sceti.co.jp/export/)

<Manufactured by > : BioAcademia, Inc. 7-7-18 Saito-Asagi, Ibaraki, Osaka 567-0085, JAPAN