

## Anti-HP1 $\beta$ /CBX1 antibody (rabbit), affinity purified

70-223      50  $\mu$ g

Heterochromatin protein 1 (HP1) is a major component of heterochromatin and plays a role in assembly of various proteins on chromatin and gene silencing. The HP1 family is evolutionarily conserved, with members in fungi, plants and animals but not prokaryotes, and there are multiple members within the same species. The HP1 family of proteins is encoded by a class of genes known as the chromobox (CBX) genes. In humans, HP1  $\beta$  is encoded by the *Chromobox homolog 1* (CBX1) gene located on chromosome 17q21.32. HP1  $\beta$  has been observed to interact directly or indirectly with several non-histone proteins with a wide variety of functions (1).

The product is prepared by immunizing rabbit with the synthetic peptide **CNEDDDKKDDKN** including the C-terminal sequence (176-185) of human HP1  $\beta$  (3) and by affinity purification with the peptide. The antiserum was prepared by the direction of Prof. T. Haraguchi (Ref. 3).

### Applications

- 1) Western blotting (1/2000~1/10000) (Fig. 1)
- 2) Immunofluorescence staining (Ref. 3)
- 3) Chromatin immunoprecipitation (ChIP)(Ref. 3)

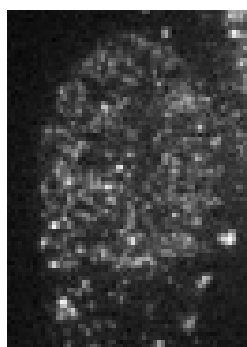
**Reactivity:** Human and hamster. Expected to react with mouse, chicken, zebra fish, Xenopus and Drosophila orthologs due to the sequence identity of the immunogen.

**Form:** Affinity purified rabbit IgG, 0.44 mg/ml in 0.12 M sodium phosphate buffer (pH 7.4), 50% glycerol, filter-sterilized, azide free

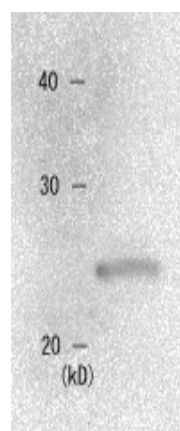
**Storage:** -20°C (long period, -70°C)

**References:** This product was used in reference 3.

1. Lomber G et al. *Genome Biol.* 7, 228 (2006), review
2. Kametaka A et al. *Genes Cells* 7, 1231 (2002)
3. Wang F et al. *Mol. Cell. Biol.* 26, 4028 (2006)



**Fig. 1 Immunofluorescent staining of HP1  $\beta$  in Baby Hamster Kidney cells with this antibody.** Cells were fixed with para-formaldehyde. The second antibody was Alexa Fluor 594-conjugated goat anti-rabbit IgG



**Fig.2 Identification of HP1  $\beta$  by western blotting with the antibody in the crude cell extract.**

Sample: Extract of MCF7 cells  
The antibody was used at 1000 fold dilution

**Related products:** Anti-HP1  $\alpha$  antibody, 70-225 Anti-HP1  $\gamma$  antibody

<Distributed by >: SCETI K.K. DF Kasumigaseki Place, 3-6-7 Kasumigaseki, Chiyoda-ku Tokyo 100-0013 JAPAN Tel: +81-3-5510-2347 Fax: +81-3-5510-0134  
E-mail: [exp-pet@sceti.co.jp](mailto:exp-pet@sceti.co.jp) URL: [www.sceti.co.jp/export/](http://www.sceti.co.jp/export/)

<Manufactured by > : BioAcademia, Inc. 7-7-18 Saito-Asagi, Ibaraki, Osaka 567-0085, JAPAN