

Anti-HP1 α /CBX5 antibody (rabbit), affinity purified

70-221 50 μ g

Heterochromatin protein 1 (HP1) is a major component of heterochromatin and play a role in assembly of various proteins on chromatin and gene silencing. The HP1 family is evolutionarily conserved, with members in fungi, plants and animals but not prokaryotes, and there are multiple members within the same species. The HP1 family of proteins is encoded by a class of genes known as the chromobox (CBX) genes. In humans, HP1 α is encoded by the *Chromobox homolog 5* (CBX5) gene located on chromosome 12q13.13. HP1 α has been observed to interact directly or indirectly with several non-histone proteins with a wide variety of functions (1).

The product is prepared by immunizing rabbit with the synthetic peptide **CEDAENKEKETAKS** corresponding to the amino acid sequence 179-191 of human HP1 α and by affinity purification with the peptide. The antiserum was prepared by the direction of Prof. T. Haraguchi.

Applications

- 1) Western blotting (1/1000~1/3000) (Fig.1)
- 2) Immunofluorescence staining (1/200~ 1/1000)

Reactivity: Human. Not tested with other species

Form: Affinity purified IgG 0.37 mg/ml in 0.12 M sodium phosphate buffer (pH 7.4), 50% glycerol, sterile-filtered, azide free

Storage: -20°C (long period, -70°C)

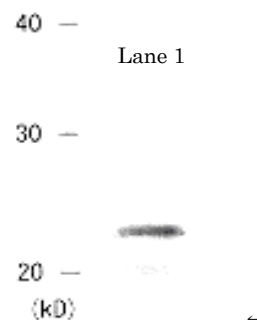
References

1. Lomber G et al. *Genome Biol.* 7, 228 (2006), review
2. Kametaka A et al. *Genes Cells* 7, 1231 (2002)
3. Wang F et al. *Mol. Cell. Biol.* 26, 4028 (2006)

Fig. Detection of HP1 α protein by Western blotting.

Lane 1 Crude extract of MCF7 cells.

The antiserum was diluted 1000 fold before use.



Related product: 70-223 Anti-HP1 β antibody, 70-225 Anti-HP1 γ antibody

<Distributed by >: SCETI K.K. DF Kasumigaseki Place, 3-6-7 Kasumigaseki,
Chiyoda-ku Tokyo 100-0013 JAPAN Tel: +81-3-5510-2347 Fax: +81-3-5510-0134
E-mail: exp-pet@sceti.co.jp URL: www.sceti.co.jp/export/

<Manufactured by > : BioAcademia, Inc. 7-7-18 Saito-Asagi, Ibaraki, Osaka 567-0085, JAPAN