

## Anti-HIV-1 Reverse Transcriptase Antibody

Immuned Animal: Rabbit

Polyclonal antiserum

65-001      50 µl,      65-002      250 µl

HIV-1 reverse transcriptase is an RNA-dependent DNA polymerase of HIV-1(AIDS virus), subtype B origin (1). It also has RNaseH activity and is an enzyme indispensable to the reproduction of AIDS virus.

The product is prepared by immunizing rabbit with HIV-1 reverse transcriptase which was uniquely over-overexpressed as recombinant protein in *E. coli* by a patent method and highly purified (2).

Using this antiserum in Western blotting, the bands of 66 kD and 51 kD corresponding respectively to the two subunits of HIV-1 reverse transcriptase were observed in the extract of the AIDS virus infected cells (Fig 1).

### Usage

- 1) It can be used in Western blotting or ELISA for HIV-1 reverse transcriptase detection and titration.

### Specification

Form: 0.09% sodium azide added to the antiserum.

Storage: 4°C

### Reference:

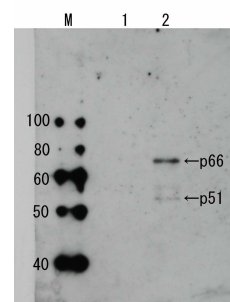
1. Adachi A, et al., J. Virol. 59, 284 (1986)
2. Saitoh A, et al., Microbiol. Immunol. 34:509-521 (1990)

Fig. 1 Detection of HIV-1 reverse transcriptase by Western blotting using anti-HIV-1 reverse transcriptase antibody

Lane 1, Extract of MT4 cells.

Lane 2, Extract of MT4 cells infected with HIV-1 (LAI strain).

The antiserum was diluted 2500 fold before use.



<Distributed by >: SCETI K.K. DF Kasumigaseki Place, 3-6-7 Kasumigaseki,  
Chiyoda-ku Tokyo 100-0013 JAPAN  
Tel: +81-3-5510-2347 Fax: +81-3-5510-0134  
E-mail: [exp-pet@sceti.co.jp](mailto:exp-pet@sceti.co.jp) URL: [www.sceti.co.jp/export/](http://www.sceti.co.jp/export/)

<Manufactured by> : BioAcademia, Inc. 7-7-18 Saito-Asagi, Ibaraki, Osaka 567-0085, JAPAN