

Anti-Mrc1 (*S. pombe*) antibody, rabbit antiserum

63-151 50 μ l 63-153 250 μ l

Mrc1 (Mediator of replication checkpoint 1) is a S-phase checkpoint protein of *Schizosaccharomyces pombe* found at replication forks, required for phosphorylation and activation of Cds1 during DNA replication stress, where it forms a replication pausing complex, and is phosphorylated by Rad3 and Tel1 kinases. The phosphorylated form of Mrc1 is detected by a change in the electrophoretic mobility.

Applications

- 1) Western blotting (x5,000 dilution)
- 2) Immuno-precipitation

Specification

Immunogen: Purified recombinant protein containing amino acids 1~317 of Mrc1

Form: Undiluted rabbit antiserum added with 0.05 % sodium azide

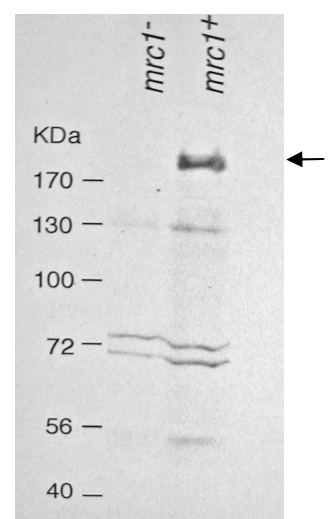
Storage: 4 C (long period, -70C)

Reference : This product is described and used in reference 1

1. Zhao H. Mol Cell Biol 23: 8395 (2003)

Fig. 1 Western blot analysis of Mrc1 in whole cell extracts.

Lane 1, *mrc1*⁻ strain. Lane 2, Wild type strain.



<Distributed by >: SCETI K.K. DF Kasumigaseki Place, 3-6-7 Kasumigaseki,
Chiyoda-ku Tokyo 100-0013 JAPAN
Tel: +81-3-5510-2347 Fax: +81-3-5510-0134
E-mail: exp-pet@sceti.co.jp URL: www.sceti.co.jp/export/

<Manufactured by> : BioAcademia, Inc. 7-7-18 Saito-Asagi, Ibaraki, Osaka 567-0085, JAPAN