

## Rad52 Protein (human )

10-003 20  $\mu$ g, 10-004 100  $\mu$ g

Human Rad52 protein plays a major role in genetic recombination and recombination repair by mediating strand-annealing reaction between complementary DNA strands (1). Rad52 functionally and physically interacts with Rad51, Dmc1, and RPA in recombination processes. In radiation damaged cell, Rad52 is phosphorylated at Tyr104 by c-Abl tyrosine kinase and forms nuclear foci (2)

The product was highly purified from E. coli over-expressing human Rad52 protein as a recombinant protein (3).

### Usage

- 1) Studies on homologous recombination in mammals including human
- 2) Studies on the interaction of Rad52 protein with various proteins
- 3) To be used as a standard for western blotting.

### Specification

Purity: > 90% as judged from SDS-PAGE analysis (Fig.1)

Form: 1.0 mg/ml in 20 mM potassium phosphate pH 7.5

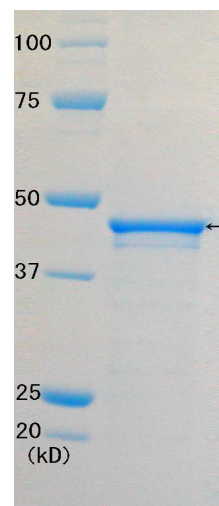
200 mM KCl, 2 mM 2ME, 0.5 mM EDTA, 20% glycerol

Storage: -70°C

### Reference: This product was used in reference 3

1. Friedberg EC, et al. DNA Repair and Mutagenesis 2<sup>nd</sup> ed., ASM Press
2. Kitao H & Yuan Z M, J. Biol. Chem. 277:48944 (2002)
3. Kurumizaka H et al. J Biol Chem 276: 35201 (2001)

Fig. Analysis of purified human Rad51 protein by SDS-PAGE.



### Related Products :

70-011 anti-Rad52 (human) rabbit affinity purified antibody

10-001 Rad51 (human) protein

70-001 Anti-Rad51 (human) rabbit antiserum

70-003 Anti-Rad51 (human) chicken antiserum

70-005 AntiRad51 (human) IgY

70-007 Anti-Rad51 (human) IgY-conjugated resin

70-009 Anti-Rad51(human) IgY, antigen affinity purified

<Distributed by >: SCETI K.K. DF Kasumigaseki Place, 3-6-7 Kasumigaseki,  
Chiyoda-ku Tokyo 100-0013 JAPAN  
Tel: +81-3-5510-2347 Fax: +81-3-5510-0134  
E-mail: [exp-pet@sceti.co.jp](mailto:exp-pet@sceti.co.jp) URL: [www.sceti.co.jp/export/](http://www.sceti.co.jp/export/)

<Manufactured by> : BioAcademia, Inc. 7-7-18 Saito-Asagi, Ibaraki, Osaka 567-0085, JAPAN