

## Botulinum C3 Enzyme

01-513

10 µg

This product was highly purified from the supernatant of the culture of *Clostridium botulinum* type C by cation exchange hydroxyapatite and gel filtration columns. This toxin ADP-ribosylates Rho, which is a lowmolecular weight GTP-binding protein of animal cells, and interrupts the downstream signal transduction pathways (1). The molecular weight is 24kDa (Fig. 1)

### Applications

- 1) For the studies on the Rho-dependent signaling pathways in animal cells.

### Specifications

Purity: More than 90 % pure by SDS-PAGE (CBB staining)

Form: 50% glycerol, 5 mM sodium phosphate buffer (pH 6.0)

Storage: -20°C (long period; -70°C)

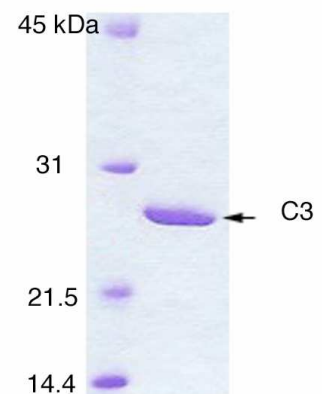
Protein concentration: 160 µg/ml

- \* No toxic effect was observed in two mice injected by 5 µg of C3 enzyme, showing little contamination of lethal toxins in this preparation
- \* Research use only, not to be used for human

### Reference:

1. Moriishi K et al J. Bacteriology 173, 6025-6029, 1991

Fig.1 Polyacrylamide gel electrophoresis of C3 Enzyme



<Distributed by >: SCETI K.K. DF Kasumigaseki Place, 3-6-7 Kasumigaseki,  
Chiyoda-ku Tokyo 100-0013 JAPAN  
Tel: +81-3-5510-2347 Fax: +81-3-5510-0134  
E-mail: [exp-pet@sceti.co.jp](mailto:exp-pet@sceti.co.jp) URL: [www.sceti.co.jp/export/](http://www.sceti.co.jp/export/)

<Manufactured by > : BioAcademia, Inc. 7-7-18 Saito-Asagi, Ibaraki, Osaka 567-0085, JAPAN