



# Peninsula Laboratories, LLC

A Member of the Bachem Group

305 Old County Road, San Carlos, CA 94070

Tel: (800) 922-1516 • (650) 592-5392

Fax: (650) 595-4071

www.bachem.com

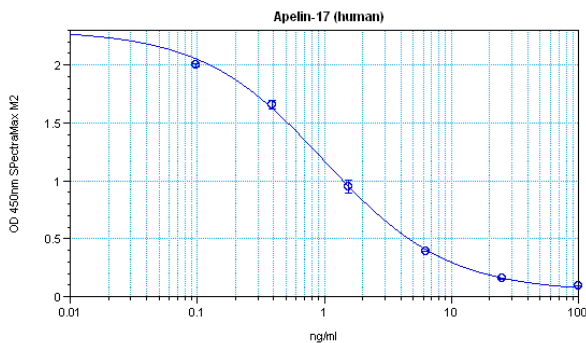


## Cat. No. S-1444 Apelin-17 (human)

**SPECIFICATIONS:** Formulated for extracted samples

**STANDARD:** 1 µg H-6302 H-Lys-Phe-Arg-Arg-Gln-Arg-Pro-Arg-Leu-Ser-His-Lys-Gly-Pro-Met-Pro-Phe-OH

**PROTOCOL:** III (Std.Ab1hr.Bt)  
**RANGE:** 0-100 ng/ml  
**AVERAGE IC<sub>50</sub>:** 1 ng/ml  
**SHELF-LIFE:** One year from production date



$y = ((A - D) / (1 + (x/C)^B)) + D$

Parameter	Value
A	2.3
B	0.899
C	1.004
D	0.041
R <sup>2</sup>	0.999

○ Apelin-17 (Group#1: Concentration vs MeanValue)

Suggested Preparation of Standards		
	ng/ml	Range: 0.10 to 100 ng/ml
<b>Stock</b>	1000	
<b>S1</b>	100.00	Add 100 µl stock + 900 µl diluent
<b>S2</b>	25.00	Add 200 µl S1 + 600 µl diluent
<b>S3</b>	6.25	Add 200 µl S2 + 600 µl diluent
<b>S4</b>	1.56	Add 200 µl S3 + 600 µl diluent
<b>S5</b>	0.39	Add 200 µl S4 + 600 µl diluent
<b>S6</b>	0.10	Add 200 µl S5 + 600 µl diluent
<b>S0</b>	0.00	500 µl diluent

### CROSS REACTION:

PEPTIDE	%
Apelin-17 (human, bovine, mouse, rat)	100
Apelin-15	100
Apelin-13 (human, bovine, mouse, rat)	100
Angiotensin I	0
Angiotensin II	0
Angiotensin III	0