



Peninsula Laboratories, LLC

A Member of the Bachem Group

305 Old County Road, San Carlos, CA 94070

Tel: (800) 922-1516 • (650) 592-5392

Fax: (650) 595-4071

www.bachem.com



Cat. No. S-1410 Afamelanotide (Nle⁴,D-Phe⁷)- α -MSH

SPECIFICATIONS: Formulated for extracted samples

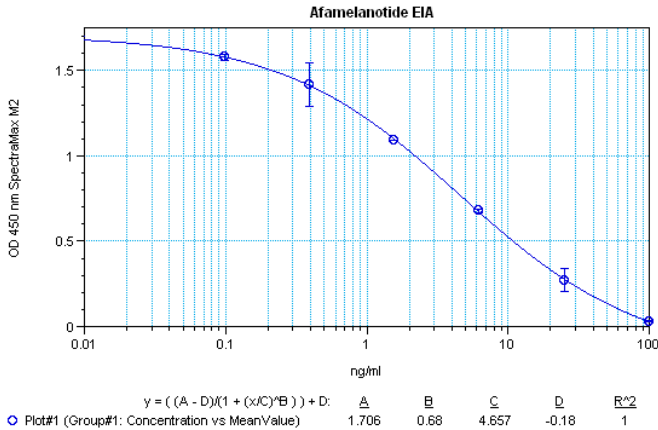
STANDARD: 1 μ g H-1100 Ac-Ser-Tyr-Ser-Nle-Glu-His-D-Phe-Arg-Trp-Gly-Lys-Pro-Val-NH₂

PROTOCOL: III (Std.Ab1hr.Bt)

RANGE: 0-100 ng/ml

AVERAGE IC₅₀: 5 ng/ml

SHELF-LIFE: One year from production date



Suggested Preparation of Standards		
	ng/ml	Range: 0.10 to 100 ng/ml
Stock	1000	
S1	100.00	Add 100 μ l stock + 900 μ l diluent
S2	25.00	Add 200 μ l S1 + 600 μ l diluent
S3	6.25	Add 200 μ l S2 + 600 μ l diluent
S4	1.56	Add 200 μ l S3 + 600 μ l diluent
S5	0.39	Add 200 μ l S4 + 600 μ l diluent
S6	0.10	Add 200 μ l S5 + 600 μ l diluent
S0	0.00	500 μ l diluent

CROSS REACTION:

PEPTIDE

%

Afamelanotide

100