



Peninsula Laboratories, LLC

A Member of the Bachem Group

305 Old County Road, San Carlos, CA 94070

Tel: (800) 922-1516 • (650) 592-5392

Fax: (650) 595-4071

www.bachem.com



Cat. No. S-1350 Glucagon (1-29) (human, porcine, rat) (For rat serum and plasma samples)

SPECIFICATIONS: Extraction-free kit for rat serum/plasma

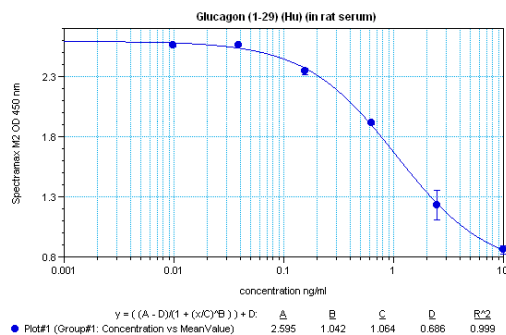
STANDARD: 1 µg H-6790 H-His-Ser-Gln-Gly-Thr-Phe-Thr-Ser-Asp-Tyr-Ser-Lys-Tyr-Leu-Asp-Ser-Arg-Arg-Ala-Gln-Asp-Phe-Val-Gln-Trp-Leu-Met-Asn-Thr-OH

PROTOCOL: V (Ab1hr.Std2hr.BtON)

RANGE: 0-10 ng/ml

AVERAGE IC₅₀: 1 ng/ml

SHELF-LIFE: One year from production date



Suggested Preparation of Standards		
	ng/ml	Range: 0.01 to 10 ng/ml
Stock	1000	
S1	10.00	Add 10 µl stock + 990 µl diluent
S2	2.50	Add 200 µl S1 + 600 µl diluent
S3	0.63	Add 200 µl S2 + 600 µl diluent
S4	0.16	Add 200 µl S3 + 600 µl diluent
S5	0.04	Add 200 µl S4 + 600 µl diluent
S6	0.01	Add 200 µl S5 + 600 µl diluent
S0	0.00	500 µl diluent

CROSS REACTION:

PEPTIDE	%
Glucagon (1-29) (human, porcine, rat)	100
Insulin (human)	0
Somatostatin-14	0
α-CGRP (human)	0
Amylin (human)	0
Amylin (free acid) (rat)	0
Pancreatic Polypeptide (human)	0
Glucagon (19-29) (human)	0
Glucagon-like Peptide I (GLP-I) (human)	0
GLP-2 (human)	0
Proinsulin (human)	0