



**Peninsula Laboratories, LLC**  
 A Member of the Bachem Group  
 305 Old County Road, San Carlos, CA 94070  
 Tel: (800) 922-1516 • (650) 592-5392  
 Fax: (650) 595-4071  
 www.bachem.com



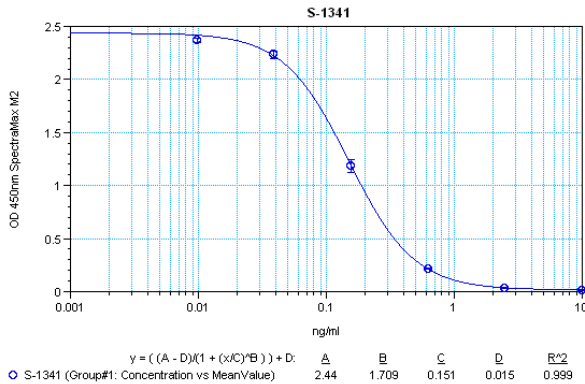
**Cat. No. S-1341**  
**Octreotide**

**(For human serum and plasma samples)**

**SPECIFICATIONS:** Extraction-free kit for human serum/plasma

**STANDARD:** 1 µg H-5972 H-D-Phe-Cys-Phe-D-Trp-Lys-Thr-Cys-L-threoninol, (Disulfide bond)

**PROTOCOL:** V (Ab1hr.Std2hr.BtON)  
**RANGE:** 0-10 ng/ml  
**AVERAGE IC<sub>50</sub>:** 0.1 ng/ml  
**SHELF-LIFE:** One year from production date



Suggested Preparation of Standards		
	ng/ml	Range: 0.01 to 10 ng/ml
<b>Stock</b>	1000	
<b>S1</b>	10.00	Add 10 µl stock + 990 µl diluent
<b>S2</b>	2.50	Add 200 µl S1 + 600 µl diluent
<b>S3</b>	0.63	Add 200 µl S2 + 600 µl diluent
<b>S4</b>	0.16	Add 200 µl S3 + 600 µl diluent
<b>S5</b>	0.04	Add 200 µl S4 + 600 µl diluent
<b>S6</b>	0.01	Add 200 µl S5 + 600 µl diluent
<b>S0</b>	0.00	500 µl diluent

**CROSS REACTION:**

PEPTIDE	%
Octreotide	100
Somatostatin-14	0
Somatostatin-28	0
Somatostatin Analog, RC-160	0
Somatostatin Analog, (CTOP)	0

Cross-Reactivity data is taken from Radioimmunoassay applications.