



Peninsula Laboratories, LLC

A Member of the Bachem Group

305 Old County Road, San Carlos, CA 94070

Tel: (800) 922-1516 • (650) 592-5392

Fax: (650) 595-4071

www.bachem.com



Cat. No. S-1339 Preptin (human)

SPECIFICATIONS: Formulated for extracted samples

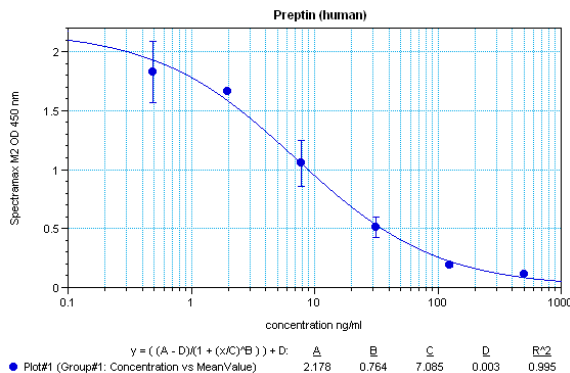
STANDARD: 1 µg H-6568 H-Asp-Val-Ser-Thr-Pro-Pro-Thr-Val-Leu-Pro-Asp-Asn-Phe-Pro-Arg-Tyr-Pro-Val-Gly-Lys-Phe-Phe-Gln-Tyr-Asp-Thr-Trp-Lys-Gln-Ser-Thr-Gln-Arg-Leu-OH

PROTOCOL: III (Std.Ab1hr.Bt)

RANGE: 0-500 ng/ml

AVERAGE IC₅₀: 10 ng/ml

SHELF-LIFE: One year from production date



Suggested Preparation of Standards		
	ng/ml	Range: 0.49 to 500 ng/ml
Stock	1000	
S1	500.00	Add 250 µl stock + 250 µl diluent
S2	125.00	Add 200 µl S1 + 600 µl diluent
S3	31.25	Add 200 µl S2 + 600 µl diluent
S4	7.81	Add 200 µl S3 + 600 µl diluent
S5	1.95	Add 200 µl S4 + 600 µl diluent
S6	0.49	Add 200 µl S5 + 600 µl diluent
S0	0.00	500 µl diluent

CROSS REACTION:

PEPTIDE

Preptin (human)

Preptin (rat)

%

100

0