



Peninsula Laboratories, LLC

A Member of the Bachem Group

305 Old County Road, San Carlos, CA 94070

Tel: (800) 922-1516 • (650) 592-5392

Fax: (650) 595-4071

www.bachem.com



Cat. No. S-1275 Octreotide

SPECIFICATIONS: Formulated for extracted samples

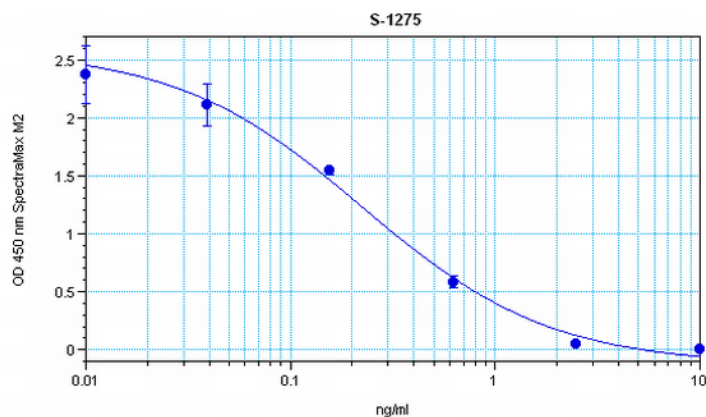
STANDARD: 1 µg H-5972 H-D-Phe-Cys-Phe-D-Trp-Lys-Thr-Cys-L-threoninol, (Disulfide bond)

PROTOCOL: I (Std.Ab.Bt)

RANGE: 0-10 ng/ml

AVERAGE IC₅₀: 0.3 ng/ml

SHELF-LIFE: One year from production date



Suggested Preparation of Standards		
	ng/ml	Range: 0.01 to 10 ng/ml
Stock	1000	
S1	10.00	Add 10 µl stock + 990 µl diluent
S2	2.50	Add 200 µl S1 + 600 µl diluent
S3	0.63	Add 200 µl S2 + 600 µl diluent
S4	0.16	Add 200 µl S3 + 600 µl diluent
S5	0.04	Add 200 µl S4 + 600 µl diluent
S6	0.01	Add 200 µl S5 + 600 µl diluent
S0	0.00	500 µl diluent

$y = ((A - D)/(1 + (x/C)^B)) + D$
 Plot#1 (Group#1: Concentration vs MeanValue) A: 2.586 B: 0.947 C: 0.224 D: -0.131 R²: 0.996

CROSS REACTION:

PEPTIDE	%
Octreotide	100
Somatostatin-14	0
Somatostatin-28	0
Somatostatin Analog, RC-160	0
Somatostatin Analog, (CTOP)	0