



Peninsula Laboratories, LLC

A Member of the Bachem Group

305 Old County Road, San Carlos, CA 94070

Tel: (800) 922-1516 • (650) 592-5392

Fax: (650) 595-4071

www.bachem.com



Cat. No. S-1269

EIA for Urotensin II-Related Peptide (human, mouse, rat) (for human serum and plasma samples)

SPECIFICATIONS: Extraction-free kit for human serum/plasma

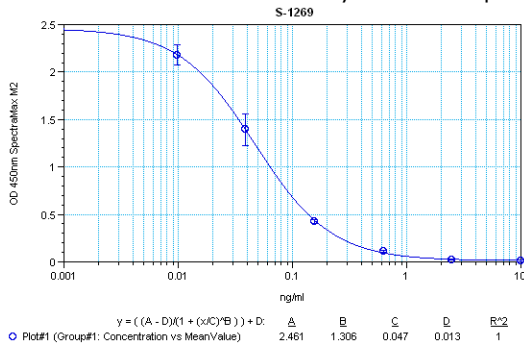
STANDARD: 1 µg H-6076 H-Ala-Cys-Phe-Trp-Lys-Tyr-Cys-Val-OH, (Disulfide bond)

PROTOCOL: V (Ab 1hr.Std 2hr.BtON)

RANGE: 0-10 ng/ml

AVERAGE IC₅₀: 0.15 ng/ml

SHELF-LIFE: One year from production date



Suggested Preparation of Standards		
	ng/ml	Range: 0.01 to 10 ng/ml
Stock	1000	
S1	10.00	Add 10 µl stock + 990 µl diluent
S2	2.50	Add 200 µl S1 + 600 µl diluent
S3	0.63	Add 200 µl S2 + 600 µl diluent
S4	0.16	Add 200 µl S3 + 600 µl diluent
S5	0.04	Add 200 µl S4 + 600 µl diluent
S6	0.01	Add 200 µl S5 + 600 µl diluent
S0	0.00	500 µl diluent

CROSS REACTION:

PEPTIDE	%:
Urotensin II-Related Peptide (human, mouse, rat)	100
Urotensin II (goby)	11.7
Urotensin II (human)	9
Urotensin II (mouse)	5.8
(Pyr ¹¹⁰)-Prepro-Urotensin II (110-123)	3.6
(Pen ⁵)-Urotensin II (4-11) (human)	0
Urotensin I	0