



Peninsula Laboratories, LLC

A Member of the Bachem Group

305 Old County Road, San Carlos, CA 94070

Tel: (800) 922-1516 • (650) 592-5392

Fax: (650) 595-4071

www.bachem.com



Cat. No. S-1259 Neuropeptide W-23 (human)

SPECIFICATIONS: Formulated for extracted samples

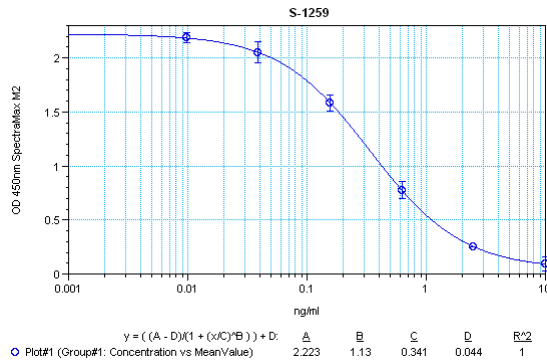
STANDARD: 1 µg H-5908 H-Trp-Tyr-Lys-His-Val-Ala-Ser-Pro-Arg-Tyr-His-Thr-Val-Gly-Arg-Ala-Ala-Gly-Leu-Leu-Met-Gly-Leu-OH

PROTOCOL: III (Std.Ab1hr.Bt)

RANGE: 0-10 ng/ml

AVERAGE IC₅₀: 0.27 ng/ml

SHELF-LIFE: One year from production date



Suggested Preparation of Standards		
	ng/ml	Range: 0.01 to 10 ng/ml
Stock	1000	
S1	10.00	Add 10 µl stock + 990 µl diluent
S2	2.50	Add 200 µl S1 + 600 µl diluent
S3	0.63	Add 200 µl S2 + 600 µl diluent
S4	0.16	Add 200 µl S3 + 600 µl diluent
S5	0.04	Add 200 µl S4 + 600 µl diluent
S6	0.01	Add 200 µl S5 + 600 µl diluent
S0	0.00	500 µl diluent

CROSS REACTION:

PEPTIDE	%
Neuropeptide W-23 (human)	100
(Des-Bromo)-Neuropeptide B (1-23) (human)	0
Neuropeptide Y (human, rat)	0
Neuropeptide γ	0
Neuropeptide F	0
Neuropeptide AF (human)	0
Ghrelin (human)	0
Ghrelin (rat)	0
Orexin A (human, bovine, mouse, rat)	0
Orexin B (human)	0