



Peninsula Laboratories, LLC

A Member of the Bachem Group

305 Old County Road, San Carlos, CA 94070

Tel: (800) 922-1516 • (650) 592-5392

Fax: (650) 595-4071

www.bachem.com



Cat. No. S-1244

β-Endorphin (porcine)

SPECIFICATIONS: Formulated for extracted samples

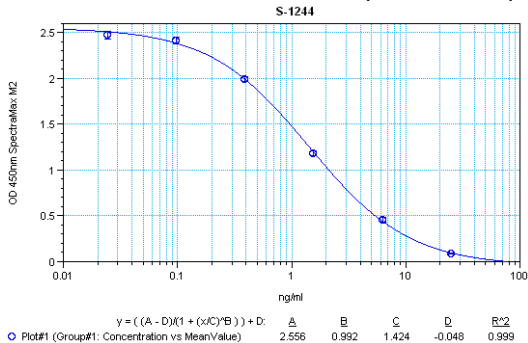
STANDARD: 1 μg (not available separately) H-Tyr-Gly-Gly-Phe-Met-Thr-Ser-Glu-Lys-Ser-Gln-Thr-Pro-Leu-Val-Thr-Leu-Phe-Lys-Asn-Ala-Ile-Val-Lys-Asn-Ala-His-Lys-Lys-Gly-Gln-OH

PROTOCOL: III (Std.Ab1hr.Bt)

RANGE: 0-25 ng/ml

AVERAGE IC₅₀: 1.5 ng/ml

SHELF-LIFE: One year from production date



Suggested Preparation of Standards		
	ng/ml	Range: 0.02 to 25 ng/ml
Stock	1000	
S1	25.00	Add 25 μl stock + 975 μl diluent
S2	6.25	Add 200 μl S1 + 600 μl diluent
S3	1.56	Add 200 μl S2 + 600 μl diluent
S4	0.39	Add 200 μl S3 + 600 μl diluent
S5	0.10	Add 200 μl S4 + 600 μl diluent
S6	0.02	Add 200 μl S5 + 600 μl diluent
S0	0.00	500 μl diluent

CROSS REACTION:

PEPTIDE

PEPTIDE	%
β-Endorphin (porcine)	100
β-Endorphin (human)	100
β-Endorphin (equine)	100
β-Lipotropin (porcine)	100
β-Endorphin (1-27) (human)	92
β-Endorphin (rat)	80
Ac-β-Endorphin (human)	70
Ac-β-Endorphin (1-27) (human)	50
β-Endorphin (6-31) (human)	43
β-Endorphin (camel, bovine, ovine)	39
β-Endorphin (1-26) (human)	37
Ac-β-Endorphin (1-26) (human)	30
γ-Endorphin	0
α-Endorphin	0
Met-Enkephalin	0
α-MSH	0
ACTH (1-39) (human)	0
Dynorphin A (1-13) (porcine)	0