



Peninsula Laboratories, LLC
 A Member of the Bachem Group
 305 Old County Road, San Carlos, CA 94070
 Tel: (800) 922-1516 • (650) 592-5392
 Fax: (650) 595-4071
 www.bachem.com

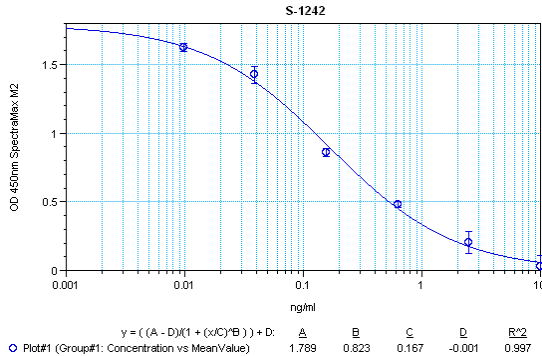


Cat. No. S-1242
C-Peptide (human)

SPECIFICATIONS: Formulated for extracted samples

STANDARD: 1 µg H-2470 H-Glu-Ala-Glu-Asp-Leu-Gln-Val-Gly-Gln-Val-Glu-Leu-Gly-Gly-Gly-Pro-Gly-Ala-Gly-Ser-Leu-Gln-Pro-Leu-Ala-Leu-Glu-Gly-Ser-Leu-Gln-OH

PROTOCOL: III (Std.Ab1hr.Bt)
RANGE: 0-10 ng/ml
AVERAGE IC₅₀: 0.3 ng/ml
SHELF-LIFE: One year from production date



Suggested Preparation of Standards		
	ng/ml	Range: 0.01 to 10 ng/ml
Stock	1000	
S1	10.00	Add 10 µl stock + 990 µl diluent
S2	2.50	Add 200 µl S1 + 600 µl diluent
S3	0.63	Add 200 µl S2 + 600 µl diluent
S4	0.16	Add 200 µl S3 + 600 µl diluent
S5	0.04	Add 200 µl S4 + 600 µl diluent
S6	0.01	Add 200 µl S5 + 600 µl diluent
S0	0.00	500 µl diluent

CROSS REACTION:

PEPTIDE	%
C-Peptide (human)	100
Insulin (human)	0
Amylin (free acid) (human)	0
Amylin (free acid) (rat)	0
Amylin (human)	0
α-CGRP (human)	0
α-CGRP (rat)	0
Glucagon (1-29) (human)	0
Pancreatic Polypeptide (rat)	0
Somatostatin-14	0
Chromogranin A (264-314) (rat)	0
VIP (human, bovine, porcine, rat)	0