



Peninsula Laboratories, LLC

A Member of the Bachem Group

305 Old County Road, San Carlos, CA 94070

Tel: (800) 922-1516 • (650) 592-5392

Fax: (650) 595-4071

www.bachem.com



Cat. No. S-1177 Pancreatic Polypeptide (human)

SPECIFICATIONS: Formulated for extracted samples

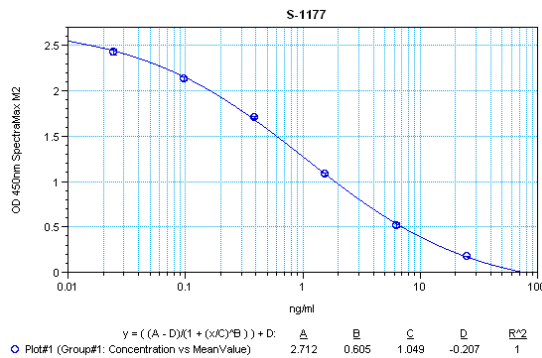
STANDARD: 1 µg H-1610 H-Ala-Pro-Leu-Glu-Pro-Val-Tyr-Pro-Gly-Asp-Asn-Ala-Thr-Pro-Glu-Gln-Met-Ala-Gln-Tyr-Ala-Ala-Asp-Leu-Arg-Arg-Tyr-Ile-Asn-Met-Leu-Thr-Arg-Pro-Arg-Tyr-NH₂

PROTOCOL: III (Std.Ab1hr.Bt)

RANGE: 0-25 ng/ml

AVERAGE IC₅₀: 1.3 ng/ml

SHELF-LIFE: One year from production date



Suggested Preparation of Standards		
	ng/ml	Range: 0.02 to 25 ng/ml
Stock	1000	
S1	25.00	Add 25 µl stock + 975 µl diluent
S2	6.25	Add 200 µl S1 + 600 µl diluent
S3	1.56	Add 200 µl S2 + 600 µl diluent
S4	0.39	Add 200 µl S3 + 600 µl diluent
S5	0.10	Add 200 µl S4 + 600 µl diluent
S6	0.02	Add 200 µl S5 + 600 µl diluent
S0	0.00	500 µl diluent

CROSS REACTION:

PEPTIDE	%
Pancreatic Polypeptide (human)	100
Pancreatic Polypeptide (rat)	100
Pancreatic Polypeptide (avian)	0
Pancreatic Polypeptide (salmon)	0
Amylin (free acid) (rat)	0
Amylin (human)	0
α-CGRP (human)	0
Glucagon (1-29) (human, bovine, porcine)	0
Insulin (human)	0
NPY (human, rat)	0
PYY (human)	0