



Peninsula Laboratories, LLC

A Member of the Bachem Group

305 Old County Road, San Carlos, CA 94070

Tel: (800) 922-1516 • (650) 592-5392

Fax: (650) 595-4071

www.bachem.com



Cat. No. S-1163

EIA for Parathyroid Hormone (1-34) (human) (for rat serum and plasma samples)

SPECIFICATIONS: Extraction-free kit for rat serum/plasma

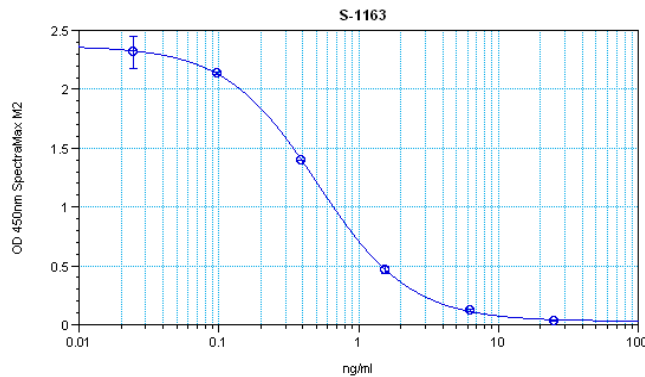
STANDARD: 1 µg H-4835 H-Ser-Val-Ser-Glu-Ile-Gln-Leu-Met-His-Asn-Leu-Gly-Lys-His-Leu-Asn-Ser-Met-Glu-Arg-Val-Glu-Trp-Leu-Arg-Lys-Lys-Leu-Gln-Asp-Val-His-Asn-Phe-OH

PROTOCOL: VII(Ab2hr.wash.Std2hr.BtON)

RANGE: 0-25 ng/ml

AVERAGE IC₅₀: 0.7 ng/ml

SHELF-LIFE: One year from production date



$y = ((A - D) / (1 + (x/C)^B)) + D$ A B C D R^2

○ S-1163 (S-1163: Concentration vs MeanValue) 2.369 1.313 0.509 0.027 1

Suggested Preparation of Standards		
	ng/ml	Range: 0.02 to 25 ng/ml
Stock	1000	
S1	25.00	Add 25 µl stock + 975 µl diluent
S2	6.25	Add 200 µl S1 + 600 µl diluent
S3	1.56	Add 200 µl S2 + 600 µl diluent
S4	0.39	Add 200 µl S3 + 600 µl diluent
S5	0.10	Add 200 µl S4 + 600 µl diluent
S6	0.02	Add 200 µl S5 + 600 µl diluent
S0	0.00	500 µl diluent

CROSS REACTION:

PEPTIDE:

Parathyroid Hormone (1-34) (human)
 Parathyroid Hormone (1-44) (human)
 Parathyroid Hormone (39-68) (human)
 Parathyroid Hormone (1-84) (human)
 [Asp⁷⁶] Parathyroid Hormone (39-84) (human)
 Parathyroid Hormone (1-34) (rat)

%:

100
 0
 0
 0
 0
 0